

HERO II HK578

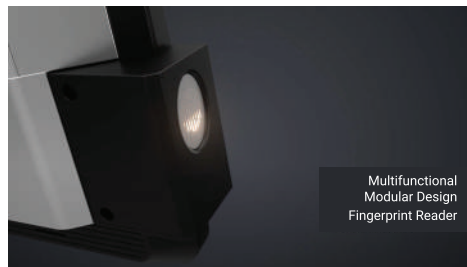
THE NEXT GENERATION



POWERED TO SUCCEED. THE NEW HERO IN TOWN.

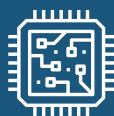
This system combines style and functionality with a sleek design and powerful performance. The versatile stand is perfect for any environment, and the easy-to-use interface makes transactions quick and simple. Give your business the edge it needs with the HiStone Hero II today.

- Powerful Performance
- Intuitive and Bright Displays
- Secure and Fast Transactions
- Sleek and Adaptable Design
- 15" TFT LCD (LED back light) | 4:3
- Compact and sleek design elements
- Versatile foldable die-cast aluminium stand
- Multiple height adjustments and viewing angles
- Wall mount capability



Operating System

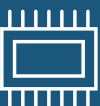
Linux | Windows 10 - 11



CPU

■ Intel Celeron J6412, Elkhart Lake, Quad-core 2.0GHz up to 2.6GHz

■ Intel Tiger Lake UP3, Intel 11th Gen CPU: Core i3 11gen; Core i5 11gen



Memory

SO-DIMM DDR4 3200MHz
4GB, up to 16GB



Storage

■ 2.5 inch SATA SSD 64GB/128GB, up to 512GB

■ 2.5 inch SATA SSD 128GB, up to 512GB

■ M.2 SSD 64GB/128GB, up to 512GB

■ M.2 drive 128GB, up to 512GB



Display

15" TFT LCD (LED back light) / 4:3 / resolution: 1024 x 768

KEY FEATURES HERO II HK578

Processor	Intel Celeron J6412, Elkhart Lake, Quad-core 2.0GHz up to 2.6GHz	Intel Tiger Lake UP3, Intel 11th Gen CPU: Core i3 11gen, Core i5 11gen
Operating System	Linux Windows 10 Windows 11	
Memory	SO-DIMM DDR4 3200MHz 4GB, up to 16GB	
Storage	2.5 inch SATA SSD 64GB/128GB, up to 512GB M.2 SSD 64GB/128GB, up to 512GB	2.5 inch SATA SSD 128GB, up to 512GB M.2 drive 128GB, up to 512GB
Display Panel	15" TFT LCD (LED back light) / 4:3 / resolution: 1024 x 768	
Power Supply	24V 60W	24V 60W(standard); 24 90W/120W(for with 80mm printer)
Speaker	2*3W Speaker	
I/O Ports	3 COM IO Panel 7* USB: 4* USB 2.0; 2* USB 3.0; 1* 24V Power USB 2.0 3* RJ50 COM Ports 1* Mini DP for integrated second display	2 COM IO Panel 8* USB: 5 * USB 2.0; 2 * USB 3.0; 1 * 24V Power USB 2.0 2 * RJ50 COM Ports 1 * DP for integrated second display
	1* RJ45 100M/1000M Gigabit LAN 1*24V Power-in 1*12V DC Output for second screen 1*Audio, 3.5mm 1*24V RJ11 for Cash drawer	7 * USB: 2 * USB 3.0; 5 * USB 2.0 (included 1*24V Powered USB) 3 * RJ50 COM Ports 1 * RJ45 100M/1000M Gigabit LAN 1 * HDMI for second display 1 * 24V Power-in 1 * 12V DC Output for second screen 1 * Audio,3.5mm 1 * 24V RJ11 for Cash drawer
Dimensions (LxWxH)	349x252x332 mm	
Weight	4.5 kg	5 kg
Optional Peripherals	Card Reader:	<ul style="list-style-type: none"> ■ MSR only(3 tracks MSR) ■ MSR+RFID (Supports MIFARE one and MIFARE CPU card)
	Fingerprint Reader:	Fingerprint Reader
	Stand:	Normal Desktop Stand
	Wall Mount:	Wall mount bracket
	Second Display:	<ul style="list-style-type: none"> ■ 15" second screen / resolution: 1024*768(Touch/non-Touch) ■ 10.4" second screen / resolution: 800 x 600(Touch/non-Touch) ■ 2x20 characters VFD
Wireless	Dual-band Wi-Fi® 802.11a/b/g/n/ac 2.4GHz/5GHz BT5.0	
Temperature	Operating: 0°C - 40°C / 20%-80% RH non-condensing Storage: -20°C - 60°C / 10%-90% RH non-condensing	
EMC and Safety	FCC / CE / RoHS	
Tilt Adjustment	Single display: 0- 150°(Vertical) Dual display:0-45°(Verical)	
Colour	Dark Gray	

DIMENSIONS HERO II HK578



Disclaimer: All products specifications are subject to change without notice.

QINGDAO HISTONE INTELLIGENT COMMERCIAL SYSTEM CO.,LTD.
 Wisdom Valley, NO.8 Shengshui Road, LaoshanDistrict, Qingdao City, China.

Tel: +86 (532) 66069168

infopos@histonetec.com www.hics.histonetec.com