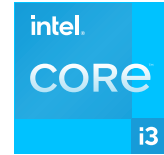


LUNA X HK568/HK568U

NEW GENERATION



POWER UNLEASHED. LIMITLESS VERSATILITY.

Elevate your customer journey with HiStone's Luna X POS system – a masterful blend of sleek design and unmatched versatility. From a 180° rotating touchscreen to tailored customization, it's the epitome of efficiency meeting elegance.

- Intel Elkhart Lake J6412 CPU provides more economical choice with high performance and low power consumption.
- Intel Tiger Lake i3 / i5 CPU brings powerful performance to streamline your business operations with ease and efficiency.
- A sleek and sophisticated touchscreen display that rotates 180 degrees for ultimate versatility.
- Larger widescreen display: 15.6" POS display brings better experience.
- Cube X box: A compact, space-saving combination of printer, barcode scanner and speaker to meet the ever-changing demands of modern businesses.

BOUNDLESS ADAPTABILITY

Discover a design tailored for every business need



DISPLAY DYNAMICS

Rotate and toggle between landscape and portrait modes to suit diverse business needs.



DESIGN THAT SPEAKS

Four-sided symmetrical screen design: a masterpiece of craft and functionality. Clearer visuals. Dependable performance. Durability that stands the test of time.

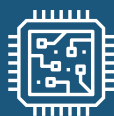


USER-CENTRIC INNOVATIONS

Effortless hard drive access: Simplified maintenance. Just one screw for hassle-free hard drive swaps.

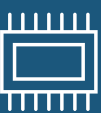


Operating System
Windows 10 - 11 | Linux



CPU
■ Intel J6412, Elkhart Lake, Quad-core 2.0GHz up to 2.6GHz

■ Intel Tiger Lake UP3, Intel 11th Gen CPU: Core i3 11gen, Core i5 11gen



RAM
■ 4GB (up to 16GB) SO-DIMM DDR4 3200MHz
■ 8GB (up to 16GB) SO-DIMM DDR4 3200MHz



Storage
■ SATA SSD 128GB, up to 512GB
■ SATA HDD 500GB
■ M.2 SATA 128GB, up to 256GB



Printer
Separate 80mm thermal printer

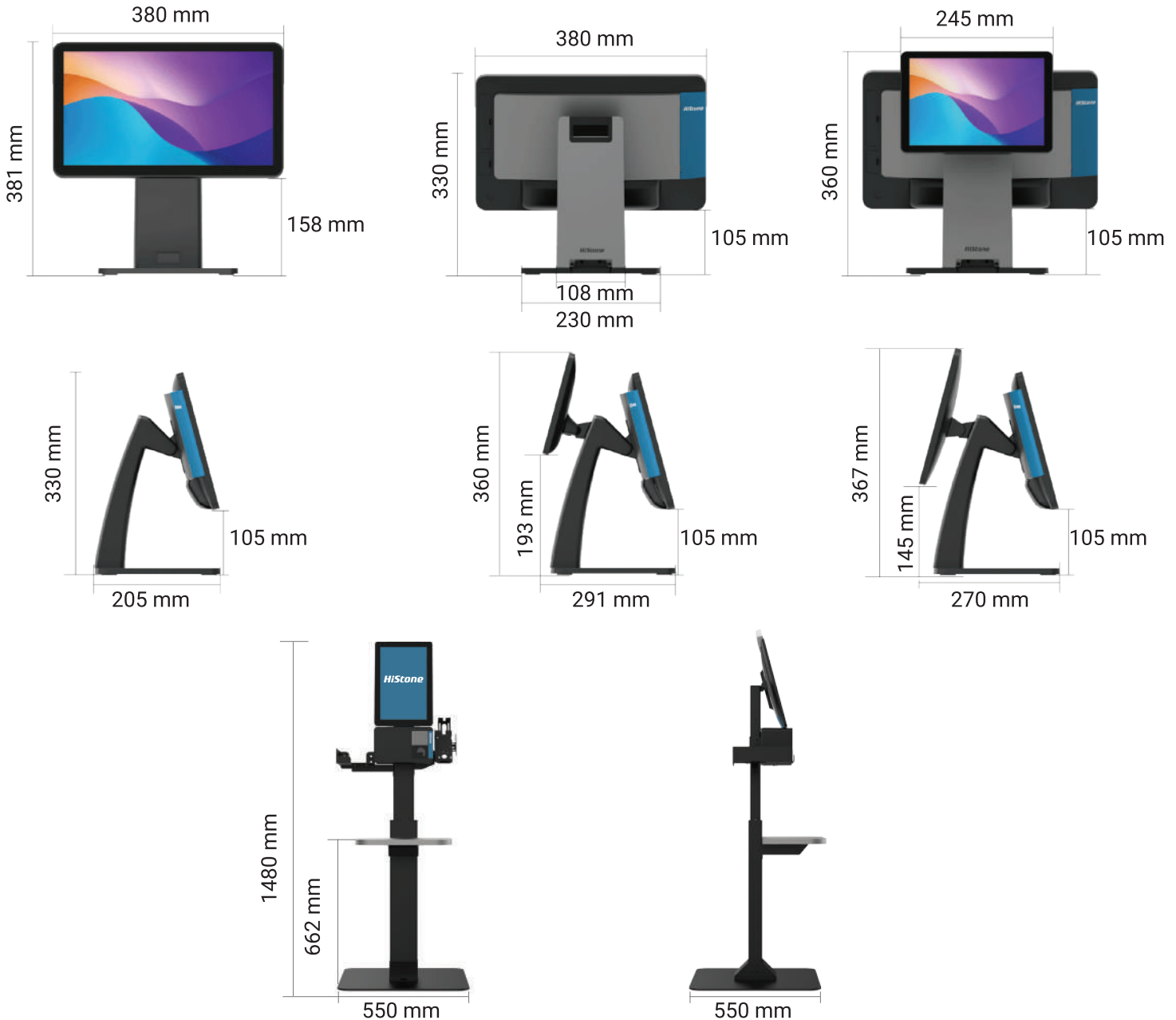


Display
15.6" LED widescreen / 16:9 / Resolution: 1920 x 1080 PCAP

KEY FEATURES LUNA X HK568/HK568U

	HK568	HK568U	
Processor	Intel Elkhart Lake J6412, Quad-core 2.0Ghz up to 2.6Ghz	Intel Tiger Lake UP3, Intel 11th Gen CPU: Core i3 11gen, Core i5 11gen	
Operating System	Linux Windows 10 Windows 11	Windows 10 Linux	
Memory	SO-DIMM DDR4 3200MHz 4GB, up to 16GB	SO-DIMM DDR4 3200MHz 8GB, up to 16GB	
Storage	SATA SSD 128GB, up to 512GB SATA HDD 500GB M.2 SATA 128GB, up to 256GB		
Display Panel	15.6" TFT-LCD (LED backlight) widescreen / standard resolution: 1920 x 1080		
Power Supply	24V 60W(Standard) / 24V 120W	24V 60W(Standard) 24V 90W 24V 120W (for device with printer)	
Speaker	1 * 2W Speaker	1 * 3W4Ω Speaker	
Wireless Connection	Dual-band Wi-Fi® 802.11a/b/g/n/ac 2.4GHz/5GHz	Dual-band Wi-Fi® 802.11a/b/g/n/ac 2.4GHz/5GHz BT5.0	
I/O Ports	4 * USB 2.0 (1 * 24V Powered USB) ; 2 * USB 3.0 (5 * Front, 1 * Side); 1 * 100M/1000M Gigabit LAN; 1 * 24V RJ11 for Cash drawer; 3 * RJ48 serial port; 1 * HDMI Port; 1 * Audio; 1 * 12V for second display;	6 * USB Ports: 4 * USB 2.0 (include 1*24V Power USB), 2 * USB 3.0; 1 * 100M/1000M Gigabit LAN; 1 * 24V RJ11 for Cash drawer; 1 * 24V Power-in; 3 * RJ48 serial port; 1 * HDMI; 1 * Audio;	
Dimensions (LxWxH)	317 ×386 ×205 mm		
Weight	6.5 kg		
Peripherals	Card Reader:	<ul style="list-style-type: none"> ■MSR only(3 tracks MSR) ■MSR+RFID (Supports MIFARE one and MIFARE CPU card) 	
	Fingerprint Reader:	Fingerprint Reader	
	Stand:	<ul style="list-style-type: none"> ■Normal Desktop Stand ■Heightened Desktop Stand for Vertical screen ■Ground Stand for Kiosk ■Turnable bracket(180°horizontal) 	
	Wall Mount:	Wall mount bracket	
	Camera for second display:	<ul style="list-style-type: none"> ■Membership recognition camera ■Face ID camera 	
	Second Display:	<ul style="list-style-type: none"> ■15.6" second screen / resolution: 1920*1080 (Touch/non-Touch) ■10.1" second screen / resolution: 1280*800 (Touch/non-Touch) ■2x20 characters VFD 	
	Printer:	Separate 80mm thermal printer	
	Wireless:	<ul style="list-style-type: none"> ■Dual-band Wi-Fi® 802.11a/b/g/n/ac 2.4GHz/5GHz ■BT5.0 	
Cube X	<ul style="list-style-type: none"> ■2D scanner * 1 (for mobile payment barcode only) ■2D scanner * 1 (for both mobile payment and goods barcode) 	80 mm printer * 1	10W speaker * 1
Temperature	Operating: 0°C - 45°C / 20%-90% RH non-condensing Storage: -10°C - 70°C / 10%-90% RH non-condensing		
EMC and Safety	FCC / CE / RoHS		
Tilt Adjustment	Dual display:0-45°(Verical)		
Colour	Black / White		

DIMENSIONS LUNA X HK568/HK568U



INCLUSIVE CONNECTIVITY

Expand your reach. Connect an external display without the need for additional adapters.



Disclaimer: All products specifications are subject to change without notice.

QINGDAO HISTONE INTELLIGENT COMMERCIAL SYSTEM CO.,LTD.
Wisdom Valley, NO.8 Shengshui Road, Laoshan District, Qingdao City, China.

Tel: +86 (532) 66069168

infopos@histonetec.com www.hics.histonetec.com